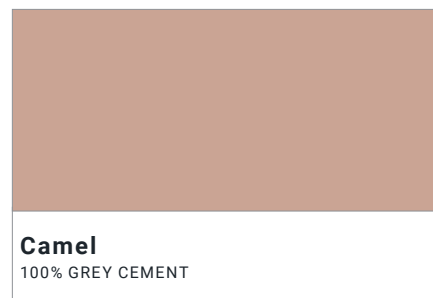
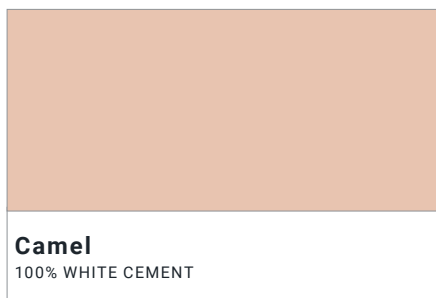
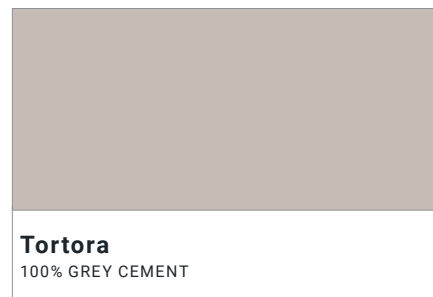
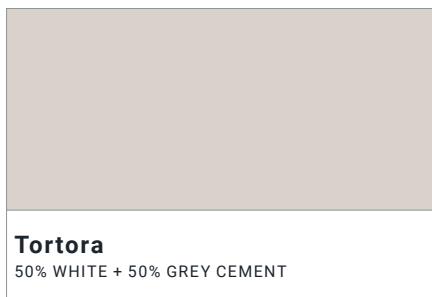
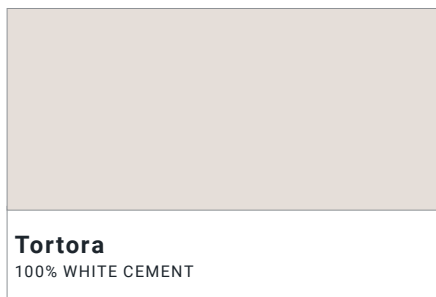
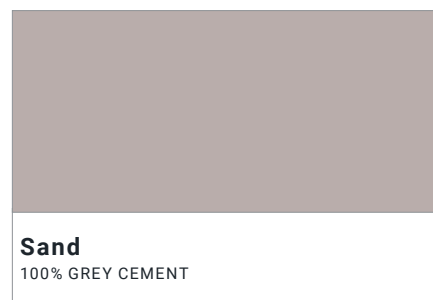
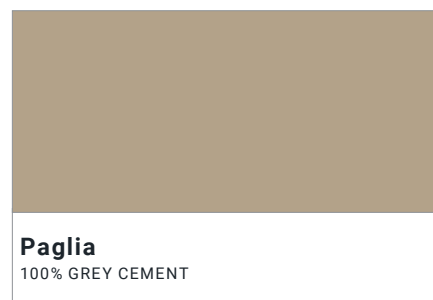
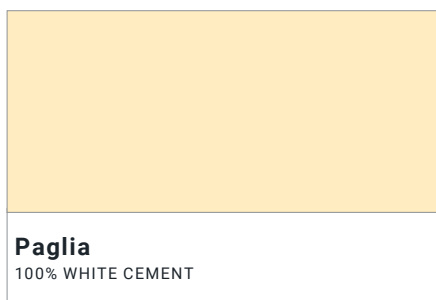
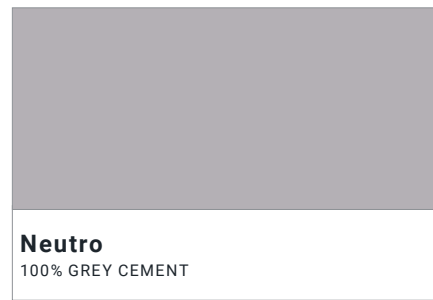
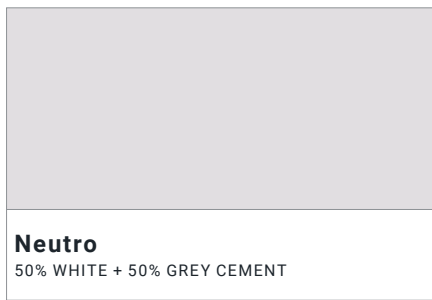
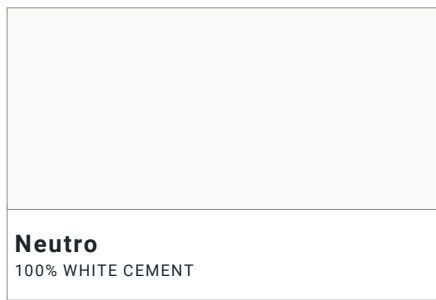


Lixio® - Color Chart

Color Mix + Cement



Made By:



Ideal Work srl
Via Kennedy, 52 - 31030
Vallà di Riese Pio X (TV) Italy
www.idealwork.com

NZ distributor and applicators:


artemani studio

info@artemani.co.nz

www.artemani.co.nz

 [artemani.studio](https://www.instagram.com/artemani.studio)

Lixio® - Color Chart

 <p>Terra Toscana 100% WHITE CEMENT</p>	 <p>Terra Toscana 50% WHITE + 50% GREY CEMENT</p>	 <p>Terra Toscana 100% GREY CEMENT</p>
 <p>Gray 100% WHITE CEMENT</p>	 <p>Gray 50% WHITE + 50% GREY CEMENT</p>	 <p>Gray 100% GREY CEMENT</p>
 <p>Antracite 100% WHITE CEMENT</p>	 <p>Antracite 50% WHITE + 50% GREY CEMENT</p>	 <p>Antracite 100% GREY CEMENT</p>

Aggregates - Measures 2-3 mm



CARRARA WHITE



BOTTICINO



OCCHIALINO



EBANO BLACK

Made By:




Ideal Work srl
Via Kennedy, 52 - 31030
Vallà di Riese Pio X (TV) Italy
www.idealwork.com

NZ distributor and applicators:

artemani studio

info@artemani.co.nz

www.artemani.co.nz

 [artemani.studio](https://www.instagram.com/artemani.studio)

Lixio® - Color Chart

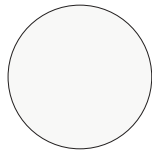
COLOUR MIX



TORTORA

+

CEMENT



WHITE

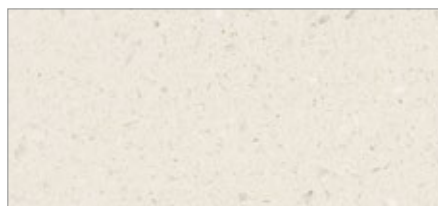
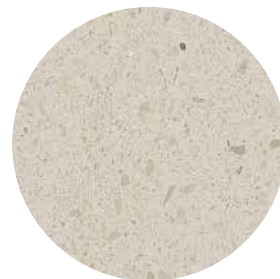
+

AGGREGATES

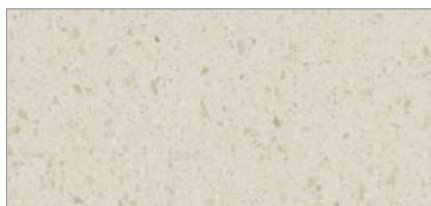


BOTTICINO

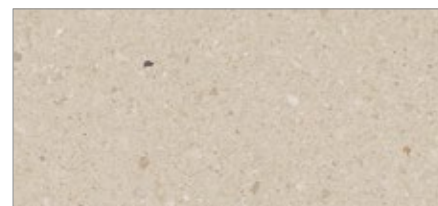
=



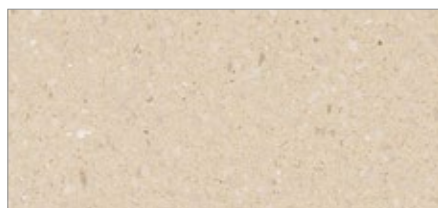
Neutro + Bianco Carrara



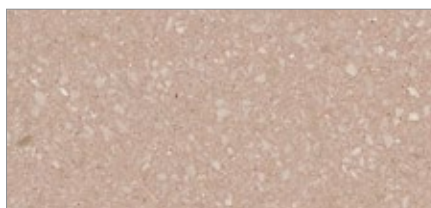
Tortora + Botticino



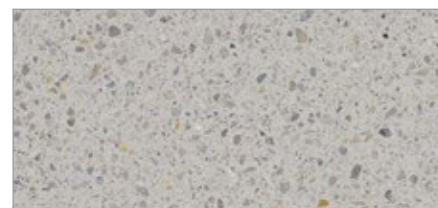
Beige + Botticino



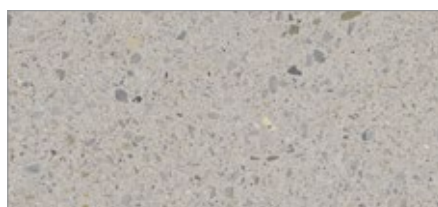
Cappuccino + Botticino



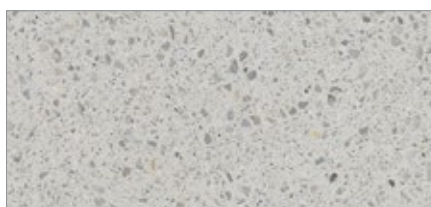
Terracotta + Botticino



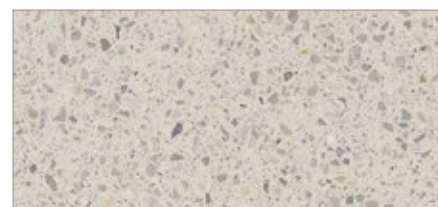
Beige Gray + Occhialino



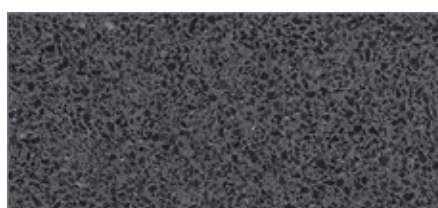
Chocolate + Occhialino



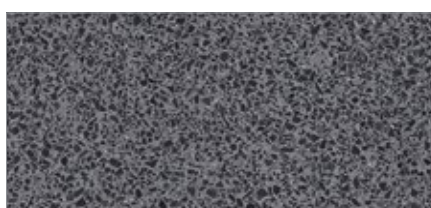
Gray + Occhialino



Olive Grey + Occhialino



Black 100% + Nero Ebano



Black 50% + Nero Ebano

Made By:



ideal work srl
Via Kennedy, 52 - 31030
Vallà di Riese Pio X (TV) Italy
www.idealwork.com

NZ distributor and applicators:

artemani studio

info@artemani.co.nz

www.artemani.co.nz

artemani.studio